



HOME CARE PACKAGE FEE SCHEDULE 1 JANUARY 2023

At JCS we work with you to ensure greater choice and flexibility enabling you to make the decision about the support and care that is right for you. Our goal is to work alongside you to access all your care and well-being requirements so that you can get the most from your Home Care Package.

Our team is extremely proud of the reputation we have built as a boutique aged care provider in Adelaide, and the diverse range of individuals we serve, who have chosen JCS as a provider they can trust to deliver their in-home and community support services.

We pride ourselves in unique quality care and community connections to benefit the individual well-being. JCS offers fully managed care services for the coordination of your Home Care Package by a dedicated care coordinator who will work with you to develop a comprehensive person-centered care plan, including regularly reviewing your plan as your goals and care needs change.

Care Management

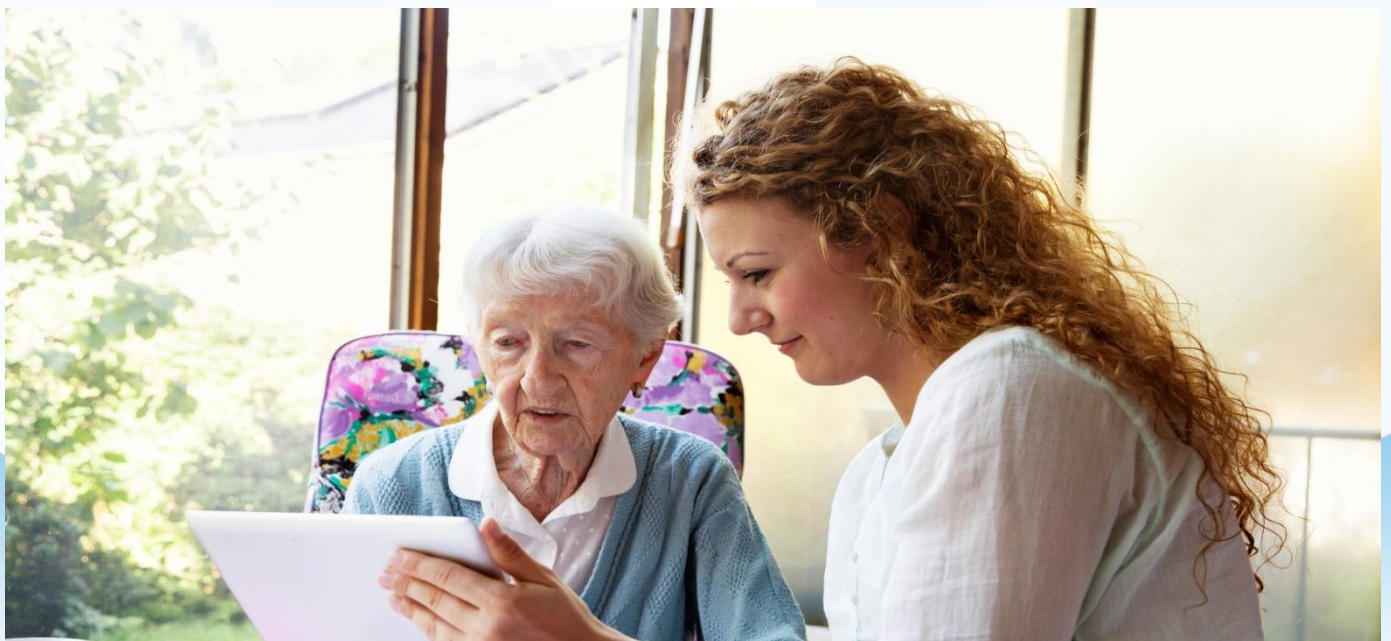
Care Management is an essential component of every Home Care Package. JCS Care Management is provided by one of our case managers and may include:

- Regularly assess your needs, goals, and preferences
- Review your home care agreement and care plan with you
- Ensure your care and services align with other supports
- Partner with you and your family or carers about your care
- Ensure your care and services are culturally safe
- Identify and address risks to your safety, health and wellbeing.

Package Management

JCS Package Management fees cover the administration support for the delivery of the services we provide to you. This may include:

- Establishing and managing your home care budgets
- Coordinating and scheduling services and workers
- Preparing invoices and monthly statements
- Making sure we are complying with regulatory and assurance activities





CARE MANAGEMENT FEES			
HCP LEVEL	CARE MANAGEMENT PERCENTAGE FROM TOTAL PACKAGE FUNDING	APPROXIMATE FEE PER FORTNIGHT	HOURS OF COORDINATION PER FORTNIGHT
LEVEL 1	20%	\$70.42	1
LEVEL 2	20%	\$123.87	1
LEVEL 3	20%	\$269.56	2
LEVEL 4	20%	\$408.63	3
ADDITIONAL CASE MANAGEMENT - \$15.00 per 15 minutes increments (Coordination of additional and complex services requested directly by the client)			
PACKAGE MANAGEMENT FEES			
HCP LEVEL	PACKAGE MANAGEMENT PERCENTAGE FROM TOTAL PACKAGE FUNDING	APPROXIMATE FEE PER FORTNIGHT	
LEVEL 1	5%	\$17.61	
LEVEL 2	5%	\$30.97	
LEVEL 3	5%	\$67.39	
LEVEL 4	5%	\$102.16	
TOTAL PACKAGE CHARGES			
LEVEL 1		\$88.03	
LEVEL 2		\$154.84	
LEVEL 3		\$336.95	
LEVEL 4		\$510.75	



HOME SUPPORT SERVICES CHARGES AS OF 1 JANUARY 2023

SERVICE	MONDAY-FRIDAY		SATURDAY		SUNDAY		PUBLIC HOLIDAY	
	7am-6pm Day	6pm-7am Night	7am-6pm Day	6pm-7am Night	7am-6pm Day	6pm-7am Night	7am-6pm Day	6pm-7am Night
Domestic Assistance (Minimum 1 Hour per each Service Required)	\$58	N/A	\$68	N/A	\$95	N/A	\$105	N/A
Personal Care & Social Support (Minimum 1 Hour per each Service Required)	1 hour \$58	N/A	1 hour \$68	N/A	1 hour \$95	N/A	1 hour \$105	N/A
Wellbeing check (Up to 30 min per service)	\$32	N/A	\$68	N/A	\$95	N/A	\$105	N/A
Respite Day Care (Minimum 1 Hour per each Service Required)	1 hour \$58	2 hours minimum \$74p/h	1 hour \$68	2 hours minimum \$95p/h	1 hour \$95	2 hours minimum \$120p/h	1 hour \$105	2 hours minimum \$152p/h
Home Gardening Services	\$60-\$100 p/h depending on services required							
Travel/Mileage or Taxi Transport	\$1.10 p/km or Taxi fare as per quote							
Social Support Group/Group Activity	\$20.00 per activity session + Meal cost							
Allied Health & Rehabilitation (such as Nursing, Occupational, Speech Therapy, Physiotherapy and Medical Equipment & Aids)	Provided by external staff. As per individual quote							
Contractor/Brokerage Services (As per Client Request)	As per individual quote							